

INFORMATION BULLETIN

TI Software V15.1.52

| Applies to the Following Projectors | Prepared for |
|-------------------------------------|--|
| All Series 1 CP2000 Projectors | External Operators and Service Technicians |

This bulletin announces the release of TI software v15.1.52 for all Series 1 CP2000 projectors.

v15.1.52 Enhancements

- ½ Screen monitoring/detection with auto recovery
- SMPTE (428-7) Subtitle Support
- SMPTE (428-7) Subtitle Positioning Support
- SMPTE (430-11) Presentation List Support

Other Changes

- Preliminary RTL support added
- Ruby text in RTL
- Fixed the Huge Font size text that caused memory leak
- FontFusion 5.0 Integrated for Panorma
- Font attribute change in Super/Sub script
- Panorama Integrated for RTL support
- Fixed the Italic RTL text truncation problem
- Multiple shadow colors in RTL
- Mixing shadow/border in a line in RTL
- Char spacing in RTL
- Aspect adjust/Anamorphic Scaling in RTL
- Fixed the last few pixels cut in RTL text with some fonts
- For RTL text, shadow and Italic are towards left
- Image error causes overlapping text fixed
- em Suffix is optional in Space, Size and Offset attributes

Special notes regarding ½ screen monitoring:

As mentioned above, this software has the ability to detect and recover from a half-screen situation.

The root cause of the half-screen is specific to RDRAMs locking on the EFIB/modular systems. FFIB / Satellite formatter systems do not have RDRAM, instead they have RLDRAM; so the half-image issue (and fix) does not apply to them. Once the system detects a RDRAM lockup, it will automatically reset the formatter and recover the system within 8 seconds.

Enabling ½ screen monitoring:

The ½ screen monitoring is turned off by default. To enable it, you need to load a special "system.env" file onto the interface card. This is explained in detail below.

IMPORTANT NOTE: Install the environment variable (**system.env**) only on units with EFIB/modular formatter systems that have the ½ image issue.

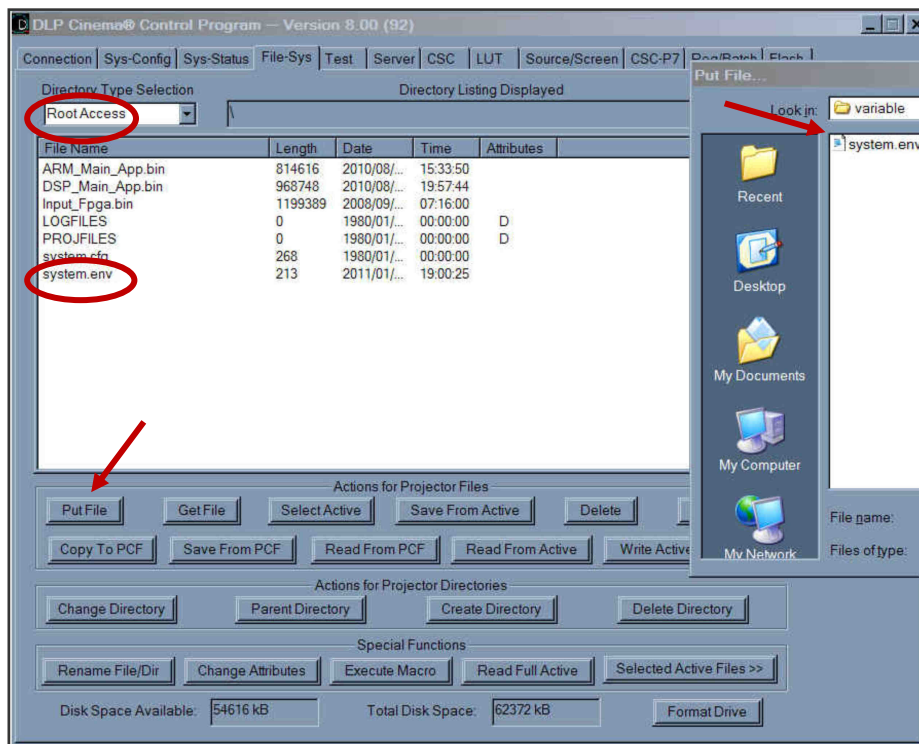
DO NOT Install the environment variable on FFIB/Satellite formatter systems.

The Environment variable is **NOT** intended for use on the FFIB / Satellite formatter systems.

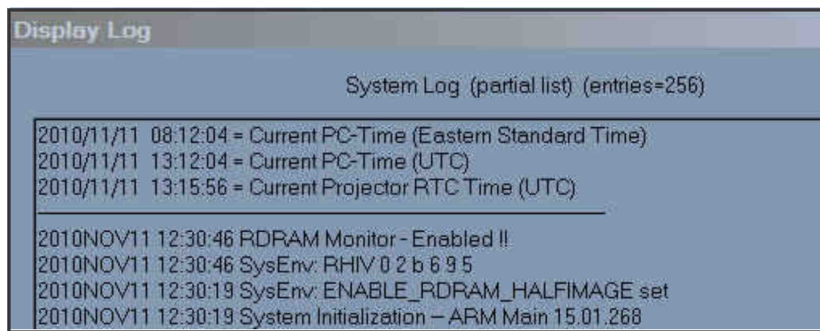
IMPORTANT NOTE: Using the environment variable on an FFIB / Satellite formatter systems will cause excessive logging and eventually damage to the board.

Tracking of projector serial numbers or Interface board serial numbers must be done to ensure that Interface boards are not installed in an FFIB/Satellite formatter system during troubleshooting or repairs.

- Install TI v15.1.52 software as per normal installation instructions using the TI control application.
- **If required for ½ image issues** install the system.env file (ENV Variable) (located in the V15.1.52 package) in the File –sys>Root Directory using the DLP Control Program> **Put file**. If a previous system.env file is already in the root directory simply delete it.



- Power Cycle the projector
- Login to the TI electronics using the control application again
- View the TI System Logs, you should now see entries similar to below:



For further assistance, please contact Tech Support at 1-800-221-8025 or email: tech-support@christiedigital.com